

## Step-In-Refrigerators

• PRODUCT SPECIFICATIONS SHEETS



\* Shown with optional outdoor cover

Self-Contained Remote	100-1S+35 R-100-1S+35	140-1S+35 R-140-1S+35	150-1S+35 R-150-1S+35
Length	48"	66-1/2"	48"
Height W/condensing unit	88"	88"	88"
Height W/O condensing unit	75"	75"	75"
Depth	60"	60"	90"
Sections	2	2	3

(Dimensions are +/-1/4")

• Specification subject to change without notice

### Standard Specifications and Optional Features

<p><b>CONSTRUCTION</b>          UL Classified to ANSI/NSF 7          Embossed aluminum          Two or three section connection for easy installation          CFC free foamed in place insulation          Heavy duty hardware          Cam lock technology</p>	<p><b>FINISHES</b>          Embossed aluminum</p>						
<p><b>INTERIOR</b>          Embossed aluminum          Heavy gauge re-enforced floor          Evaporator installed inside unit</p>	<p><b>REFRIGERATION</b>          R134a capillary tube system          Refrigeration system factory installed and charged          External drain required or condensate pan          Condensing unit          Temperature control</p>						
<p><b>EXTERIOR</b>          Embossed aluminum          Heavy duty door handle (<i>horizontally mounted to prevent carts from breaking it</i>)          Edge mounted hinges (<i>makes door easy to remove for cleaning and loading</i>)</p>	<p><b>CUBIC CAPACITY</b></p> <table border="0"> <tr> <td>100-IS</td> <td>98 Cubic Feet</td> </tr> <tr> <td>140-IS</td> <td>135 Cubic Feet</td> </tr> <tr> <td>150-IS</td> <td>145 Cubic Feet</td> </tr> </table>	100-IS	98 Cubic Feet	140-IS	135 Cubic Feet	150-IS	145 Cubic Feet
100-IS	98 Cubic Feet						
140-IS	135 Cubic Feet						
150-IS	145 Cubic Feet						
<p><b>ELECTRICAL REQUIREMENTS</b>          115V/60Hz/1Ph          Hard wired required          UL/CUL listed</p>	<p><b><u>IMPORTANT NOTE: DRAIN OR CONDENSATE PAN IS REQUIRED</u></b></p>						

### OPTIONAL FEATURES

<p>Condensate pan          Diamond plate floor          Roll-In ramp          Shelf racks</p>	<p>Side mounted condensing units          Door opening hood, outdoor use          Compressor hood, outdoor use</p>
---	--

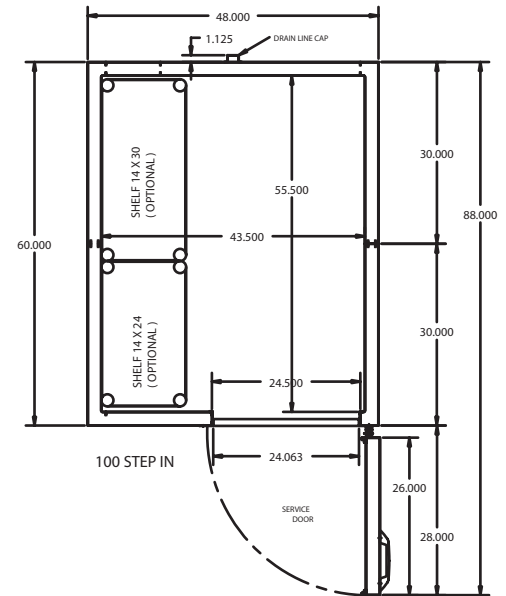
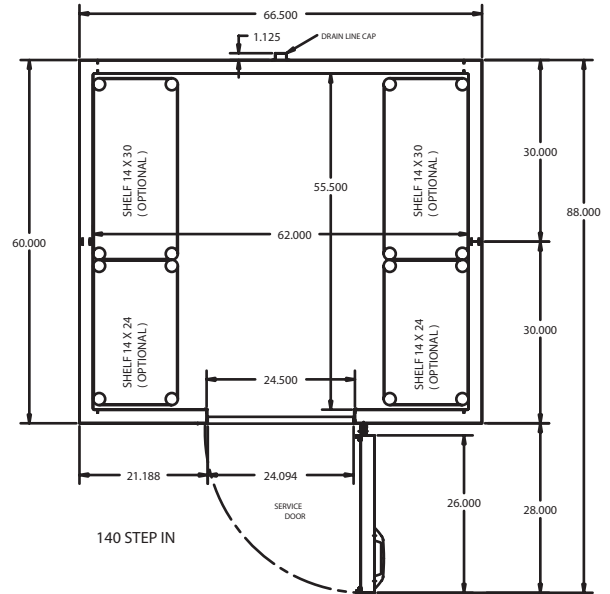
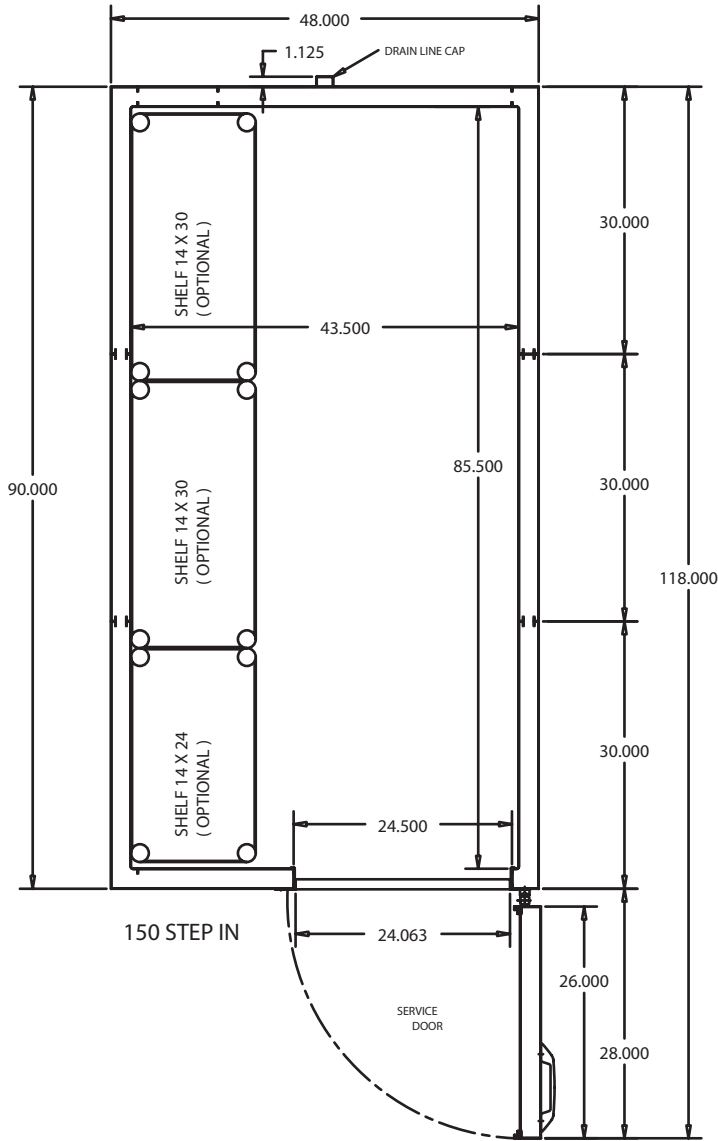


### Technical Data

Model #	Self contained	100 -1S+35		140 -1S+35		150 -1S+35	
	Remote	R-100 -1S+35		R-140 -1S+35		R-150 -1S+35	
Sizes		Cabinet	Crate	Cabinet	Crate	Cabinet	Crate
Length	FRONT	48"	60"	66½"	86"	48"	60"
Height		75"	83"	75"	83"	75"	83"
Depth		30	43"	30"	43"	30"	43"
Section		1	1	1	1	1	1
Cubic Feet		N/A	140ft <sup>3</sup>	N/A	196ft <sup>3</sup>	N/A	140ft <sup>3</sup>
Gross Weight		N/A	189#	N/A	312#	N/A	189#
Length	CENTER	N/A	N/A	N/A	N/A	48"	60"
Height		N/A	N/A	N/A	N/A	75"	83"
Depth		N/A	N/A	N/A	N/A	30"	43"
Section		N/A	N/A	N/A	N/A	1	1
Cubic Feet		N/A	N/A	N/A	N/A	N/A	140ft <sup>3</sup>
Gross Weight		N/A	N/A	N/A	N/A	N/A	169#
Length	BACK	48"	97"	66½"	97"	48"	97"
Height		88"	53"	88"	73"	88"	53"
Depth		30"	43"	30"	43"	30"	43"
Section		1	1	1	1	1	1
Cubic Feet		N/A	141ft <sup>3</sup>	N/A	192ft <sup>3</sup>	N/A	141ft <sup>3</sup>
Gross Weight		N/A	567#	N/A	447#	N/A	567#
Length	OVERALL	48"		65½"		48"	
Height with unit		88"		88"		88"	
Depth		60"		60"		90"	
Sections		2		2		3	
Gross Weight		756#		759#		925#	
Operating temperature		Self contained	+35°F		+35°F		+35°F
Refrigerant	R134a		R134a		R134a		
Compressor size- HP	Self contained	1/3		1/2		1/2	
System type		Temperature control		Temperature control		Temperature control	
Air defrost	Remote	Capillary tube		Capillary tube		Capillary tube	
BTU's at +20° F Evap. Temp.		Self defrosting		Self defrosting		Self defrosting	
Voltage	Self contained	2300		2600		2600	
Amperage		115V		115V		115V	
Cord and plug	Self contained	8.9A		10.3A		10.6A	
		No		No		No	
Exterior color	Self contained	Embossed Aluminum		Embossed Aluminum		Embossed Aluminum	
Interior color		Embossed Aluminum		Embossed Aluminum		Embossed Aluminum	
Drain required		Yes		Yes		Yes	
Cubic capacity (ft <sup>3</sup> )		98		135		145	

• Specification subject to change without notice

### Technical Data • Side View • Plan View



## Step-In-Freezers

• PRODUCT SPECIFICATIONS SHEETS



\* Shown with optional outdoor cover

**Self-Contained  
Remote**

**100-1S-5  
R-100-1S-5**

**140-1S-5  
R-140-1S-5**

**150-1S-5  
R-150-1S-5**

**Length**  
**Height W/condensing unit**  
**Height W/O condensing unit**  
**Depth**  
**Sections**  
(Dimensions are +/-1/4")

48"  
93"  
75"  
60"  
2

66-1/2"  
93"  
75"  
60"  
2

48"  
93"  
75"  
90"  
3

• Specification subject to change without notice

### Standard Specifications and Optional Features

<p><b>CONSTRUCTION</b>          UL Classified to ANSI/NSF 7          Embossed aluminum          Two or three section connection for easy installation          CFC free foamed in place insulation          Heavy duty hardware          Cam lock technology</p>	<p><b>FINISHES</b>          Embossed aluminum</p>						
<p><b>INTERIOR</b>          Embossed aluminum          Heavy gauge re-enforced floor          Evaporator installed inside unit</p>	<p><b>REFRIGERATION</b>          R404A refrigerant system          Refrigeration system factory installed and charged          External drain required or condensate pan          Condensing unit          Temperature control - 100 series units only          Pressure control - 140 and 150 series units</p>						
<p><b>EXTERIOR</b>          Embossed aluminum          Heavy duty door handle (<i>horizontally mounted to prevent carts from breaking it</i>)          Edge mounted hinges (<i>makes door easy to remove for cleaning and loading</i>)</p>	<p><b>CUBIC CAPACITY</b></p> <table border="0"> <tr> <td>100-IS</td> <td>98 Cubic Feet</td> </tr> <tr> <td>140-IS</td> <td>135 Cubic Feet</td> </tr> <tr> <td>150-IS</td> <td>145 Cubic Feet</td> </tr> </table>	100-IS	98 Cubic Feet	140-IS	135 Cubic Feet	150-IS	145 Cubic Feet
100-IS	98 Cubic Feet						
140-IS	135 Cubic Feet						
150-IS	145 Cubic Feet						
<p><b>ELECTRICAL REQUIREMENTS</b>          115V/208-230V/60Hz/1Ph          Hard wired required          UL/CUL listed</p>	<p><b><u>IMPORTANT NOTE: DRAIN OR CONDENSATE PAN IS REQUIRED</u></b></p>						

### OPTIONAL FEATURES

<p>Condensate pan          Diamond plate floor          Roll-In ramp          Shelf racks</p>	<p>Side mounted condensing units          Door opening hood, outdoor use          Compressor hood, outdoor use</p>
---	--



### Technical Data

Model #	Self contained	100-1S-5		140-1S-5		150-1S-5	
	Remote	R-100-1S-5		R-140-1S-5		R-150-1S-5	
Sizes		Cabinet	Crate	Cabinet	Crate	Cabinet	Crate
Length	FRONT	48"	60"	66½"	86"	48"	60"
Height		75"	83"	75"	83"	75"	83"
Depth		30	43"	30"	43"	30"	43"
Section		1	1	1	1	1	1
Cubic Feet		N/A	140ft <sup>3</sup>	N/A	196ft <sup>3</sup>	N/A	140ft <sup>3</sup>
Gross Weight		N/A	249#	N/A	368#	N/A	249#
Length	CENTER	N/A	N/A	N/A	N/A	48"	60"
Height		N/A	N/A	N/A	N/A	75"	83"
Depth		N/A	N/A	N/A	N/A	30"	43"
Section		N/A	N/A	N/A	N/A	1	1
Cubic Feet		N/A	N/A	N/A	N/A	N/A	140ft <sup>3</sup>
Gross Weight		N/A	N/A	N/A	N/A	N/A	185#
Length	BACK	48"	97"	66½"	97"	48"	97"
Height		93"	53"	93"	73"	93"	53"
Depth		30"	43"	30"	43"	30"	43"
Section		1	1	1	1	1	1
Cubic Feet		N/A	141ft <sup>3</sup>	N/A	168ft <sup>3</sup>	N/A	141ft <sup>3</sup>
Gross Weight		N/A	452#	N/A	560#	N/A	474#
Length	OVERALL	48"		65½"		48"	
Height with unit		93"		93"		93"	
Depth		60"		60"		90"	
Sections		2		2		3	
Gross Weight		701#		928#		908#	
Operating temperature		Self contained	0°F to -5°F		0°F to -5°F		0°F to -5°F
Refrigerant	R404A		R404A		R404A		
Compressor size- HP	Self contained	3/4		1		1	
System type		Cap tube		Expansion valve		Expansion valve	
Defrost per day (24 hours)	Electric	Temperature control		Pressure control		Pressure control	
BTU's at -25°F Evap. Temp.		3		3		3	
Voltage	Remote	2900		4000		4000	
Amperage		115/208-230V		115/208-230V		115/208-230V	
Cord and plug	Self contained	8.5A		9.8A		9.8A	
		No		No		No	
Exterior color	Self contained	Embossed Aluminum		Embossed Aluminum		Embossed Aluminum	
Interior color		Embossed Aluminum		Embossed Aluminum		Embossed Aluminum	
Drain required		Yes		Yes		Yes	
Cubic capacity (ft <sup>3</sup> )		98		135		145	

• Specification subject to change without notice

### Technical Data • Side View • Plan View

