

SR Series Reach-In-Refrigerators - Top Mount

• PRODUCT SPECIFICATIONS SHEETS



**Self-Contained
Remote**

**SR22
R-SR22**

**SR48
R-SR48**

**SR75
R-SR75**

Length
Height with casters
Depth with drain
(Dimensions are +/-1/4")

26-1/2"
83"
36-1/2"

52-1/4"
83"
36-1/2"

78"
83"
36-1/2"

• Specification subject to change without notice

SR Series
Reach-In-Refrigerators - Top Mount

Standard Specifications and Optional Features

<p>CONSTRUCTION UL Classified to ANSI/NSF 7 Top mounted condensing unit 5" heavy duty casters CFC free foam in place insulation Externally mounted dial thermometer Heavy duty edge mount hinges Self closing doors</p>	<p>REFRIGERATION R134a Condensing unit Capillary tube system Temperature control regulates even temperature Automatic Air defrost Electric evaporator pan - (115V separate) 115 External</p>
<p>INTERIOR 3 epoxy shelves per door Aluminum interior</p>	<p>LIGHTING Automatic interior light turns on when door is opened</p>
<p>EXTERIOR Stainless front and door Aluminum end panels Heavy duty door locks Horizontal mounted handle Frame heater minimizes moisture around door</p>	<p>ELECTRICAL REQUIREMENTS 115V/60Hz/1Ph Cord and plug included UL/CUL listed</p>

OPTIONAL FEATURES

<p>Stainless steel outside ends Stainless steel interior Door swing change 6" legs top mount units only Digital thermometer</p>	<p>Pan slides Extra shelf Half-door or glass doors</p>
---	--



Technical Data

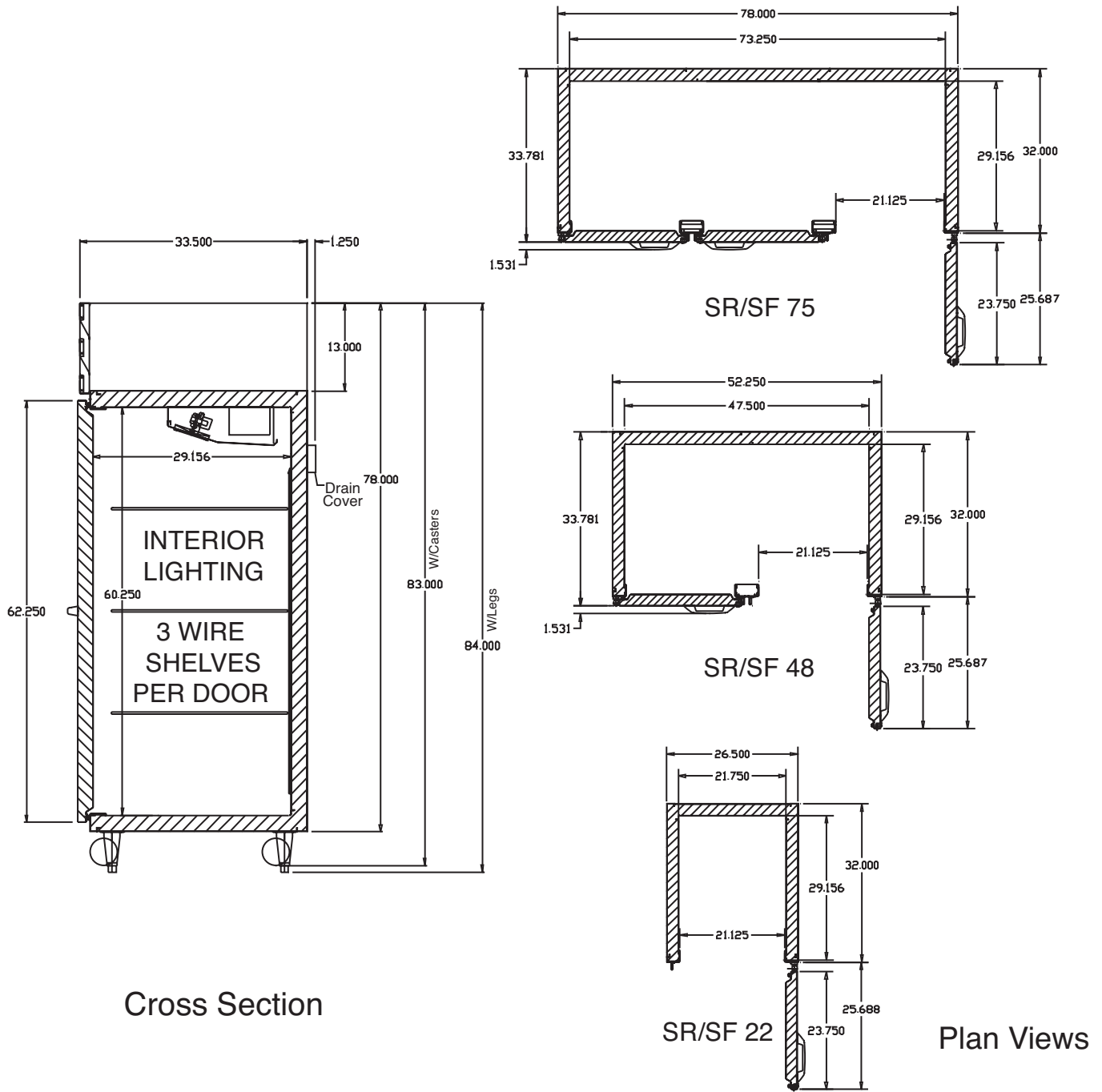
Model #	Self contained	SR22	SR48	SR75
	Remote	R-SR22	R-SR48	R-SR75
Length Height with caster Depth w/drain line (Dimensions are +/- 1/4")		26-1/2" 83" 36-1/2"	52-1/4" 83" 36-1/2"	78" 83" 36-1/2"
Operating temperature Refrigerant Compressor size- HP Refrigeration system Air Defrost BTU's at +20°F Evap. Temp. Voltage Amperage Amperage Cord and plug	Self contained Self contained Remote Self contained Remote	36°F to 40°F R134a Capillary tube 1/4 Temperature control Self defrost 1740 115V 6.8A 1.1A YES (15A)	36°F to 40°F R134a Capillary tube 1/3 Temperature control Self defrost 2300 115V 9.6A 2.0A YES (15A)	36°F to 40°F R134a Capillary tube 1/2 Temperature control Self defrost 4400 115V 12.1A 2.3A YES(20A)
Door size Cubic capacity (ft ³)		23-3/4"X62-1/4" (1) 22	23-3/4"X62-1/4" (2) 48	23-3/4"X62-1/4" (3) 75

SHIPPING INFORMATION

Height		82"	82"	82"
Depth		44"	44"	44"
Length		31"	58"	84"
Gross weight	Self contained Remote	328# 228#	516# 401#	720# 595#
Cubic feet		73ft ³	118ft ³	171ft ³

• Specification subject to change without notice

Technical Data • Side View • Plan View



Cross Section

Plan Views

SF Series Reach-In-Freezers - Top Mount

• PRODUCT SPECIFICATIONS SHEETS



**Self-Contained
Remote**

**SF22
R-SF22**

**SF48
R-SF48**

**SF75
R-SF75**

Length
Height with casters
Depth with drain
(Dimensions are +/-1/4")

26-1/2"
83"
36-1/2"

52-1/4"
83"
36-1/2"

78"
83"
36-1/2"

• Specification subject to change without notice

Standard Specifications and Optional Features

<p>CONSTRUCTION UL Classified to ANSI/NSF 7 Top mounted condensing unit 5" heavy duty casters CFC free foam in place insulation Externally mounted dial thermometer Heavy duty edge mount hinges Self closing doors</p>	<p>REFRIGERATION R404A Condensing unit Capillary tube system Temperature control regulates even temperature Automatic Electric defrost</p>
<p>INTERIOR 3 epoxy shelves per door Aluminum interior</p>	<p>LIGHTING Automatic interior light turns on when door is opened</p>
<p>EXTERIOR Stainless front and door Aluminum end panels Heavy duty door locks Horizontal mounted handle Frame heater minimizes moisture around door</p>	<p>ELECTRICAL REQUIREMENTS 1 and 2 Door 115V/60Hz/1Ph Cord and plug 3 Door 115V/208-230V/60Hz/1Ph Must be hard wired UL/CUL listed</p>

OPTIONAL FEATURES

<p>Stainless steel outside ends Stainless steel interior Door swing change 6" legs Digital thermometer</p>	<p>Pan slides Extra shelf Half-door or glass doors</p>
--	--



Technical Data

Model #	Self contained	SF22	SF48	SF75
	Remote	R-SF22	R-SF48	R-SF75
Length Height with caster Depth w/ drain line (Dimensions are +/- 1/4")		26-1/2" 83" 36-1/2"	52-1/4" 83" 36-1/2"	78" 83" 36-1/2"
Operating temperature Refrigerant System Type Compressor size- HP Refrigeration system Defrost per day (24 hours) BTU's at -25°F Evap. Temp. Voltage Amperage Amperage Cord and plug	Self contained Self contained Electric Remote Self contained Remote	-5°F to 0°F R404A Capillary tube 1/2 Temperature control 3 @ 30 minutes 1280 115V 12.0A 9.5A YES (15A)	-5°F to 0°F R404A Capillary tube 3/4 Temperature control 3 @ 30 minutes 3320 115V 14.3A 14.0A YES (20A)	-5°F to 0°F R404A Capillary tube 1 Temperature control 3 @ 30 minutes 3980 115/208-230V 10.3A 8.6A NO
Exterior color Interior color Door size Cubic capacity (ft ³)		Stainless/Aluminum Aluminum 23-3/4"X62-1/4" (1) 22	Stainless/Aluminum Aluminum 23-3/4"X62-1/4" (2) 48	Stainless/Aluminum Aluminum 23-3/4"X62-1/4" (3) 75

SHIPPING INFORMATION

Height		82"	82"	82"
Depth		44"	44"	44"
Length		31"	58"	84"
Gross weight	Self contained Remote	373# 248#	550# 400#	790# 615#
Cubic feet		73ft ³	118ft ³	171ft ³

• Specification subject to change without notice

Technical Data • Side View • Plan View

