

Open Merchandisers 32 Series – Endless Design - Dairy

• PRODUCT SPECIFICATIONS SHEETS



- Cases are designed to operate at 75 degrees Fahrenheit and 55% relative humidity

| Self-Contained | SC-D32E-3-LS | SC-D32E-4-LS | SC-D32E-6-LS | SC-D32E-8-LS |
|--------------------------|--------------|--------------|--------------|--------------|
| Remote | R-D32E-3-LS | R-D32E-4-LS | R-D32E-6-LS | R-D32E-8-LS |
| Length with ends | 38" | 50" | 74" | 98" |
| Length without ends | 36" | 48" | 72" | 96" |
| Height with ends | 72-3/4" | 72-3/4" | 72-3/4" | 72-3/4" |
| Height without ends | 71-7/8" | 71-7/8" | 71-7/8" | 71-7/8" |
| Depth with ends | 29-3/8" | 29-3/8" | 29-3/8" | 29-3/8" |
| (Dimensions are +/-1/4") | | | | |

- Specification subject to change without notice

Standard Specifications and Optional Features

| | |
|--|--|
| <p>CONSTRUCTION Foamed in place CFC free foam Heavy gauge steel super structure Multi deck</p> | <p>FINISHES Designer white or black end panels Designer white or black front rail Designer white or black front color band Designer white or black end trim Coated galvanized rear</p> |
| <p>INTERIOR Designer white or black end panels Removable designer white or black floor pans Designer white or black perforated rear wall (<i>for even air distribution</i>) Full length lighting at top of unit 1 level of 12" lighted shelving 2 levels of 14" lighted shelving 4 levels of product display Over 50" of display area Stylish tag molding on each shelf</p> | <p>REFRIGERATION R404A expansion valve system Low velocity fans located below deck area (<i>to insure even flow of air</i>) Pressure control maintains constant temperatures Automatic defrost controlled by time clock (<i>self contained units only</i>) Air screen technology Self contained system Copeland hermetic unit Remotes available</p> |
| <p>EXTERIOR Designer white or black ends and front Designer white or black color-band Designer white or black end trim Removable front grille allows for cleaning and servicing 1" designer gray bumper</p> | <p>LIGHTING 1 row at inside top of unit 2 rows of lighted shelves</p> |
| <p>ELECTRICAL REQUIREMENTS Unit must be hard wired UL/CUL listed See Tech page for details on voltage</p> | <p><i>Important Note: All refrigerated cases are designed to operate in an environment of 75 degrees and 55% relative humidity.</i></p> <p><i>Important Note: Product must be cooled before being displayed within the case.</i></p> <p><i>Important Note: DRAIN IS REQUIRED</i></p> |

OPTIONAL FEATURES

| | |
|---|--|
| <p>Night covers Peg bars Step shelves Condensate pan-4' case only Insulated divider for line ups 4" of Plexiglas on end panel</p> | <p>Stainless steel, laminated or paint Product stops on shelving Security cover Plexiglas divider for line ups Digital thermometer</p> |
|---|--|

(ALL WHITE OR ALL BLACK, NO EXTRA CHARGE—IF COLORS ARE MIXED AN ADDITIONAL CHARGE WILL APPLY)

Open Merchandisers 32 Series – Endless Design - Dairy

Technical Data

| Model | Self contained | SC-D32E-3-LS | SC-D32E-4-LS | SC-D32E-6-LS | SC-D32E-8-LS |
|--|----------------|----------------|----------------|----------------|----------------|
| | Remote | R-D32E-3-LS | R-D32E-4-LS | R-D32E-6-LS | R-D32E-8-LS |
| Length with ends | | 38" | 50" | 74" | 98" |
| Length without ends | | 36" | 48" | 72" | 96" |
| Height with ends | | 72-3/4" | 72-3/4" | 72-3/4" | 72-3/4" |
| Height without ends | | 71-7/8" | 71-7/8" | 71-7/8" | 71-7/8" |
| Depth with ends (Dimensions are +/- 1/4") | | 29-3/8" | 29-3/8" | 29-3/8" | 29-3/8" |
| Operating temperature | Self contained | 36°F to 40°F | 36°F to 40°F | 36°F to 40°F | 36°F to 40°F |
| Refrigerant (expansion valve) | Self contained | R404A | R404A | R404A | R404A |
| Compressor size HP | | 1/2 | 1/2 | 1 | 1 |
| Pressure control settings @ 75°F, 55%RH | | CUT IN 87 | 87 | 87 | 87 |
| | | CUT OUT 43 | 43 | 43 | 43 |
| Defrost per day (24 hours) | Air Defrost | 3 @ 30 min. | 3 @ 30 min. | 3 @ 30 min. | 3 @ 30 min. |
| BTU's at +20°F Evap. Temp. | Remote | 3900 | 5200 | 7800 | 10400 |
| Voltage | | 115V | 115V | 115/208-230V | 115/208-230V |
| Amperage | Self contained | 14.5A | 14.5A | 15.6A | 17.4A |
| Amperage | Remote | 3.0A | 3.0A | 5.6A | 6.2A |
| Cord and plug | | No | No | No | No |
| Exterior color | | White or Black | White or Black | White or Black | White or Black |
| Interior color | | White or Black | White or Black | White or Black | White or Black |
| Inside end panels | | White or Black | White or Black | White or Black | White or Black |
| Floors | | White or Black | White or Black | White or Black | White or Black |

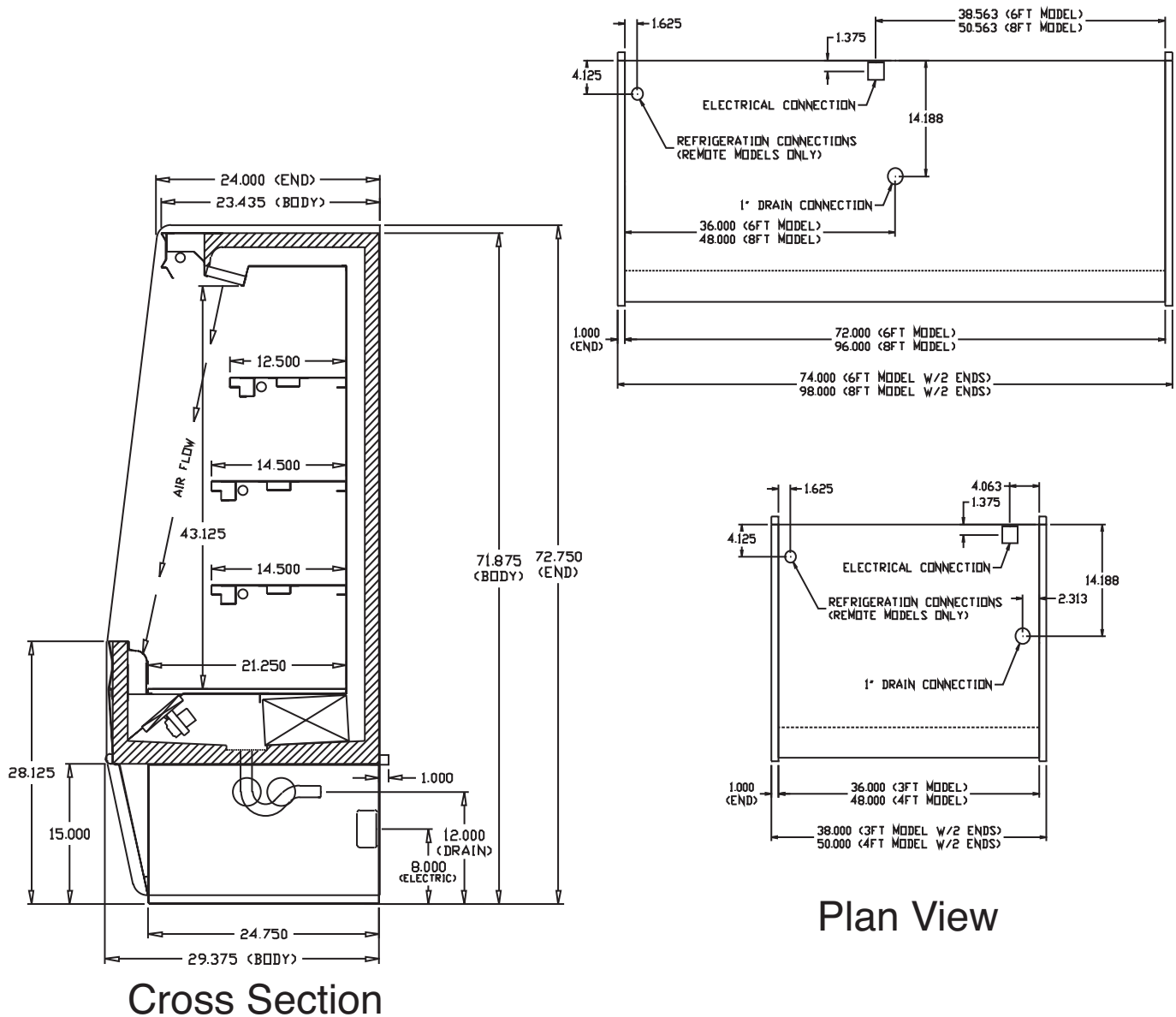
(ALL WHITE OR ALL BLACK, NO EXTRA CHARGE—IF COLORS ARE MIXED AN ADDITIONAL CHARGE WILL APPLY)

SHIPPING INFORMATION

| | | | | | |
|--------------|----------------|--------------------|--------------------|--------------------|--------------------|
| Height | | 76" | 76" | 76" | 76" |
| Depth | | 44" | 44" | 44" | 44" |
| Length | | 61" | 61" | 87" | 109" |
| Gross weight | Self contained | 700# | 700# | 965# | 1175# |
| | Remote | 575# | 575# | 790# | 1000# |
| Cubic feet | | 118ft ³ | 118ft ³ | 168ft ³ | 211ft ³ |

- Cases are designed to operate at 75 degrees Fahrenheit and 55% relative humidity
- Cases are equipped with drains; check your local building codes for connection requirements.
- Specification subject to change without notice

Technical Data • Side View • Plan View



Plan View

Cross Section