

40E Series - Endless Design Curved Glass - Bakery - Dry



Model No.	Description	Length	Depth	Height	Voltage	Amps	HP	Power Cord	Est. Ship Weight
D-CBS40E-4C-LS	Self-contained	51.5"	40"	53"	115	12.0	1/4	YES	530
D-CBS40E-6C-LS	Self-contained	75.5"	40"	53"	115	12.0	1/3	YES	741
D-CBS40E-8C-LS	Self-contained	99.5"	40"	53"	115	12.0	1/2	YES	897

MODEL NUMBER PREFIX - SC = Self-contained R = Remote
 MODEL NUMBER SUFFIX - W = White B = Black S = Stainless Steel LED = LED lighting
 • Cases are designed to operate at 75 degrees Fahrenheit and 55% relative humidity
 • Cases are equipped with drains; check your local building codes for connection requirements.
 • Specification subject to change without notice
 IF COLORS ARE MIXED AN ADDITIONAL CHARGE WILL APPLY



40E Series - Endless Design Curved Glass - Bakery - Dry

Standard Specifications and Optional Features

CONSTRUCTION

- UL Classified to ANSI/NSF 7
- Foamed in place CFC free foam
- Heavy gauge steel super structure
- Single duty display
- Endless design allows for continuous line up
- Drain is included for cleaning
- Extra wide double bend curved glass (enhances product display)

INTERIOR

- White, black or stainless steel interior ends
- 2 rows of glass shelving
- Epoxy coated main deck shelves

EXTERIOR

- Double pane rear removable doors
- Rear door uses the McGlide door system** (for easy access)
- Removable front grille allows for cleaning
- Removable rear grille for easy servicing
- 1 - 1/2" removable end panels
- 2" Front Bumper - gray

FINISHES

- Grey finish extrusion on doors and door tracks
- White, and stainless steel front and ends
- Stainless steel mirror trim
- Stainless steel heavy gauge top - 13-3/4" W
- Rear of unit is stainless steel brush finish at top
- Bottom rear is white, black or stainless steel aluminum

LIGHTING

- 1 row of lighting at top of unit

ELECTRICAL REQUIREMENTS

- 115V/60Hz/1ph with power cord
- 115V-12AMP general purpose receptacle

OPTIONS

- Scale stand
- Paper cutter
- Stainless steel, laminate, or paint
- Mirrored doors
- Lights for mezzanine shelf
- Drop work shelf
- 1" Front Bumper
- Front bumper - optional color and marketing location
- Door locks
- Special color front bumper: 1" or 2"

Important Note:

All refrigerated cases are designed to operate in an environment of 75 degrees and 55% relative humidity.

Product must be cooled before being displayed within the case.

DRAIN IS REQUIRED

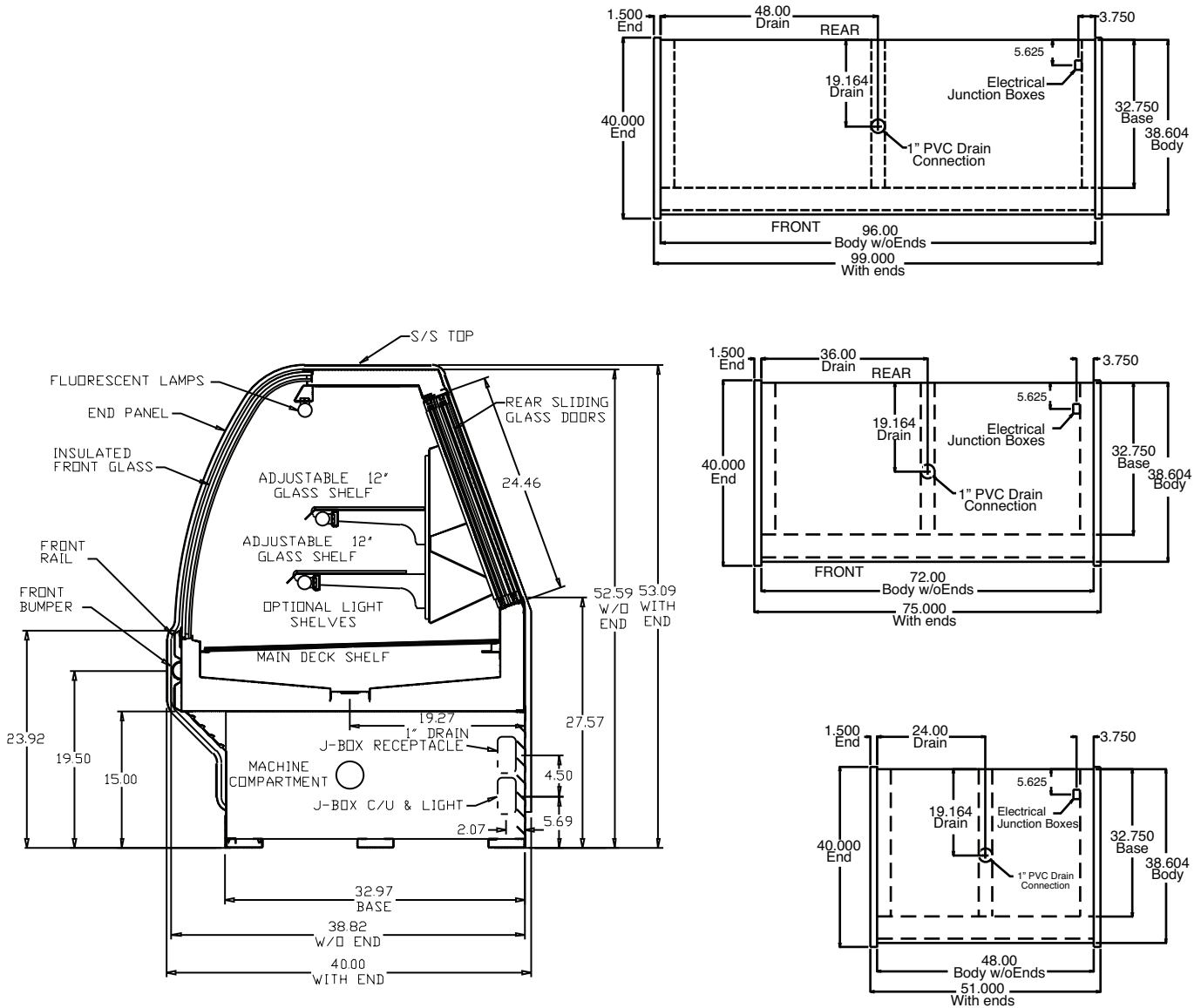
40E Series - Endless Design Curved Glass - Bakery - Dry

Technical Data

Model No.	D	D-CBS40E-4C-LS	D-CBS40E-6C-LS	D-CBS40E-8C-LS
Length with (2) ends		51.5"	75.5"	99.5"
Length without ends		48"	72"	96"
Height with ends		53"	53"	53"
Height without ends		52.5"	52.5"	52.5"
Depth with ends		40"	40"	40"
Depth without ends		38.875"	38.875"	38.875"
Endless design		YES	YES	YES
(Dimensions are +/- 1/4")				
Operating temperature		N/A	N/A	N/A
Refrigerant (exp. valve)		N/A	N/A	N/A
Compressor size HP		N/A	N/A	N/A
Defrost per day (24 hours)		N/A	N/A	N/A
BTU's at +20°F Evap. Temp.		N/A	N/A	N/A
Voltage	D	115	115	115
Amperage	D	12.0	12.0	12.0
Cord and plug	D	YES	YES	YES
Exterior color		W, S	W, S	W, S
Interior color		W	W	W
Inside end panels		W	W	W
Floors		W	W	W
# of top doors		2	2	4
Door size		20.8" x 23.5"	31.3 x 23.5	20.8" x 23.5"
# of coils		1	1	1
Bottom storage		No	No	No
Front glass		Curved	Curved	Curved
# of main deck shelves		2	3	4
Main deck size		23.5" x 32.625"	31.3" x 23.5"	20.8" x 23.5"
Cubic capacity		24.5	36.8	49
Mezzanine shelf		2 rows	2 rows	2 rows
Shipping Info				
Height		58"	58"	58"
Depth		44"	44"	44"
Length		61"	87"	109"
Gross weight SC/R		530	741	897
Cubic feet		89	128	164

40E Series - Endless Design Curved Glass - Bakery - Dry

Technical Data • Side View • Plan View



Cross Section

Plan Views