

35 Series Service Case Double Duty - Red Meat



| Model No. | Description | Length | Depth | Height | Voltage | Amps | HP/BTUs | Power Cord | Est. Ship Weight |
|--------------------|----------------|--------|-------|--------|---------|------|---------|------------|------------------|
| SC-CMS35-4 | Self Contained | 50" | 37.5" | 52" | 115 | 6.0 | 1/4 | NO | 500 |
| SC-CMS35-6 | Self Contained | 71" | 35.5" | 52" | 115 | 8.7 | 1/3 | NO | 645 |
| SC-CMS35-8 | Self Contained | 95" | 35.5" | 52" | 115 | 11.2 | 1/2 | NO | 900 |
| SC-CMS35-10 | Self Contained | 119" | 35.5" | 52" | 115 | 13.8 | 1/2 | NO | 1230 |
| SC-CMS35-12 | Self Contained | 143" | 35.5" | 52" | 115 | 17.4 | 3/4 | NO | 1344 |
| R-CMS35-4 | Remote | 50" | 37.5" | 52" | 115 | 0.8 | 1400 | NO | 460 |
| R-CMS35-6 | Remote | 71" | 35.5" | 52" | 115 | 1.3 | 2100 | NO | 595 |
| R-CMS35-8 | Remote | 95" | 35.5" | 52" | 115 | 1.6 | 2800 | NO | 845 |
| R-CMS35-10 | Remote | 119" | 35.5" | 52" | 115 | 2.4 | 3500 | NO | 1175 |
| R-CMS35-12 | Remote | 143" | 35.5" | 52" | 115 | 2.4 | 4200 | NO | 1295 |

MODEL NUMBER PREFIX - SC = Self Contained R = Remote
 MODEL NUMBER SUFFIX - W = White B = Black S = Stainless Steel LED = LED - lighting
 • Cases are designed to operate at 75 degrees Fahrenheit and 55% relative humidity
 • Cases are equipped with drains; check your local building codes for connection requirements.
 • Specification subject to change without notice
 IF COLORS ARE MIXED AN ADDITIONAL CHARGE WILL APPLY



35 Series Service Case Double Duty - Red Meat

Standard Specifications and Optional Features

CONSTRUCTION

- UL - Classified to ANSI/NSF 7
- Foamed in place CFC free foam
- Triple pane insulated front glass - 28" H
- Heavy gauge steel super structure
- Bottom storage
- Drain is included for cleaning

INTERIOR

- White, black, and stainless steel ends
- White aluminum floor (bottom storage area)
- Air insulated baffle (prevents moisture from dripping into display area)

EXTERIOR

- Double pane rear removable doors
- Newly designed rear compression door jamb
- Removable front grille allows for cleaning
- Removable rear grille for easy servicing
- 2 - 1/4" removeable end panels

FINISHES

- Satin finish extrusion on doors and door tracks
- White, black, and stainless steel front and ends
- Stainless steel mirror trim
- Stainless steel heavy gauge top - 19 - 1/2" W
- Rear of unit is stainless steel brush finish at top
- Bottom rear is designer white aluminum

LIGHTING

- 2 rows of T12 lighting at top of unit

ELECTRICAL REQUIREMENTS

- 115V
- Unit must be hard wired
- UL/CUL listed
- 115V-12AMP general purpose receptacle (wired separately)

REFRIGERATION

- Coevap system (eliminates need for condensate pan)
- R134A expansion valve system
- Gravity coil located at inside top of unit
- Self contained unit
- Automatic defrost controlled by time clock (self contained unit only)
- Pressure control maintains constant temperatures
- Remotes available

OPTIONS

- Scale stand
- Paper cutter
- Stainless steel, laminate, or paint
- Mirrored doors
- Stainless steel mezzanine shelf
- Drop work shelf
- Front bumper 1" or 3"
- Door locks
- Digital thermometer
- Pass thru front doors 4', 6', 8' only
- Meat platters
- Red meat bulbs

Important Note:

All refrigerated cases are designed to operate in an environment of 75 degrees and 55% relative humidity. Product must be cooled before being displayed within the case.

DRAIN IS REQUIRED

35 Series Service Case Double Duty - Red Meat

Technical Data

| Model No. | SC R | SC-CMS35-4 R-CMS35-4 | SC-CMS35-6 R-CMS35-6 | SC-CMS35-8 R-CMS35-8 | SC-CMS35-10 R-CMS35-10 | SC-CMS35-12 R-CMS35-12 |
|--|-------------|-------------------------|-------------------------|-------------------------|---------------------------|---------------------------|
| Length | | 50" | 71" | 95" | 119" | 143" |
| Height | | 52" | 52" | 52" | 52" | 52" |
| Depth | | 37.5" | 35.5" | 35.5" | 35.5" | 35.5" |
| Depth with bottom door | | X" | X" | X" | X" | X" |
| (Dimensions are +/- 1/4") Operating temperature | | 34°F to 36°F | 34°F to 36°F | 34°F to 36°F | 34°F to 36°F | 34°F to 36°F |
| Refrigerant (exp. valve) | SC | R134A | R134A | R134A | R134A | R134A |
| Compressor size HP | SC | 1/4 | 1/3 | 1/2 | 1/2 | 3/4 |
| Defrost per day (24 hours) | Air Defrost | 1 per day | 1 per day | 1 per day | 1 per day | 1 per day |
| BTU's at +20°F Evap. Temp. | R | 1400 | 2100 | 2800 | 3500 | 4200 |
| Voltage | SC | 115 | 115 | 115 | 115 | 115 |
| Amperage | SC | 6.0 | 8.7 | 11.2 | 13.8 | 17.4 |
| Remote Voltage | R | 115 | 115 | 115 | 115 | 115 |
| Amperage, lights only | R | 0.8 | 1.3 | 1.6 | 2.4 | 2.4 |
| Cord and plug | SC | NO | NO | NO | NO | NO |
| Exterior color | R | NO W, B, S | NO W, B, S | NO W, B, S | NO W, B, S | NO W, B, S |
| Interior color | | W, B, S | W, B, S | W, B, S | W, B, S | W, B, S |
| Inside end panels | | W, B, S | W, B, S | W, B, S | W, B, S | W, B, S |
| Floors | | W, B, S | W, B, S | W, B, S | W, B, S | W, B, S |
| # of top doors | | 2 | 2 | 4 | 4 | 4 |
| Door size | | 19.19" x 19.19" | 29.625" x 19.19" | 19.19" x 19.19" | 23.5" x 19.19" | 29.625" x 19.19" |
| # of bottom doors | SC | 1 external | 2 | 2 | 3 | 4 |
| | R | 2 | 2 | 4 | 4 | 4 |
| # of coils | | 3 | 3 | 3 | 3 | 3 |
| Bottom storage | | Yes | Yes | Yes | Yes | Yes |
| Front glass | | 26" x 45" | 26" x 66" | 26" x 90" | 26" x 114" | 26" x 138" |
| # of main deck shelves | | 2 | 3 | 4 | 5 | 6 |
| Main deck size | | 31.625" x 22.25" | 31.625" x 22.25" | 31.625" x 22.25" | 31.625" x 22.25" | 31.625" x 22.25" |
| Cubic capacity | | 30 | 45 | 60 | 75 | 90 |
| Mezzanine shelf | | Standard | Standard | Standard | Standard | Standard |
| Shipping Info | | | | | | |
| Height | | 58" | 58" | 58" | 58" | 58" |
| Depth | | 44" | 44" | 44" | 44" | 44" |
| Length | | 61" | 87" | 109" | 135" | 157" |
| Gross weight SC/R | | 500/460 | 645/595 | 900/845 | 1230/1175 | 1344/1295 |
| Cubic feet | | 90 | 128 | 160 | 200 | 231 |

(ALL WHITE OR ALL BLACK, NO EXTRA CHARGE—IF COLORS ARE MIXED AN ADDITIONAL CHARGE WILL APPLY)

Prefix

SC = Self Contained
R = Remote

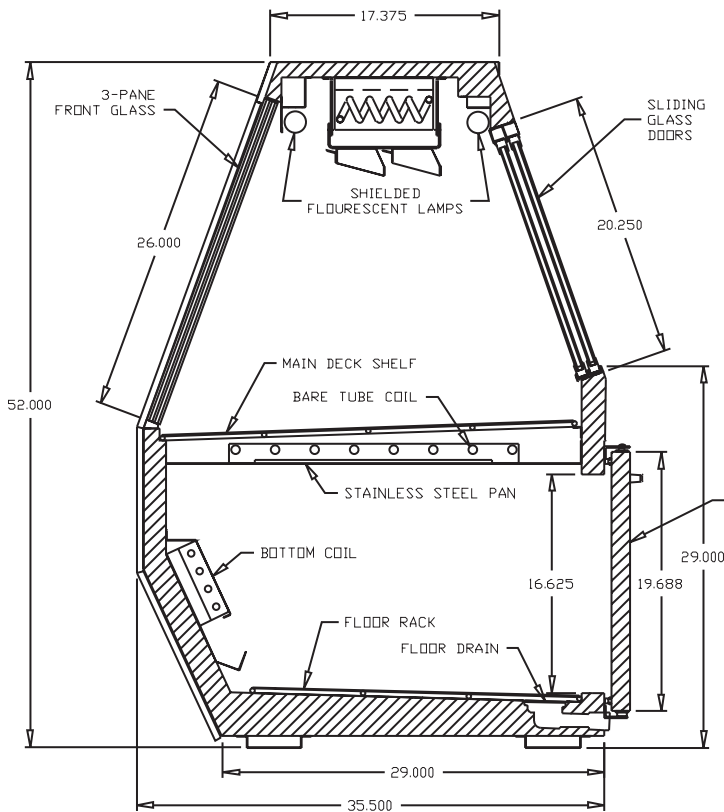
Suffix

B = Black
W = White
S = Stainless Steel
LS = T8 lighting
LED = LED lighting

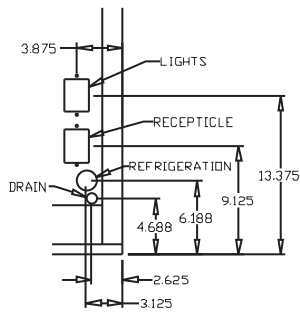
- Cases are designed to operate at 75 degrees Fahrenheit and 55% relative humidity
- Cases are equipped with drains; check your local building codes for connection requirements.
- Specification subject to change without notice

35 Series Service Case Double Duty - Red Meat

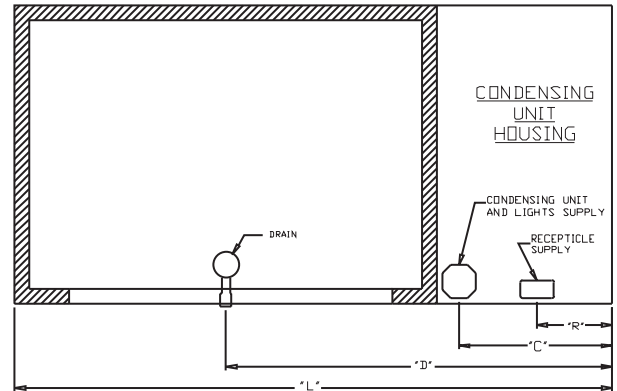
Technical Data • Side View • Plan View



Cross Section

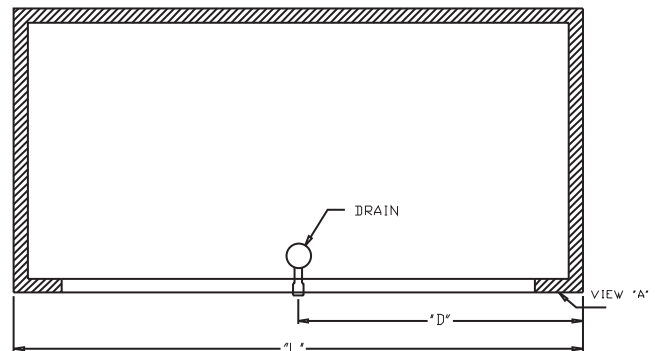


VIEW "A"



| SIZE | "L" | "R" | "C" | "D" |
|------|-----|-----|--------|--------|
| 4 | 50 | 25 | 25 | 33 |
| 6 | 71 | 9 | 18.250 | 45.875 |
| 8 | 95 | 9 | 18.250 | 57.875 |
| 10 | 119 | 9 | 18.250 | 69.875 |
| 12 | 143 | 9 | 18.250 | 81.875 |

Plan View Self-contained



| SIZE | "L" | "D" |
|------|-----|--------|
| 4 | 50 | 25 |
| 6 | 71 | 35.500 |
| 8 | 95 | 47.500 |
| 10 | 119 | 59.500 |
| 12 | 143 | 61.500 |

Plan View Remote