

32E Series - Endless Design Single Duty - Red Meat



Model No.	Description	Length	Depth	Height	Voltage	Amps	HP/BTUs	Power Cord	Est. Ship Weight
SC-CMS32E-4	Self Contained	50"	30.5"	49.6"	115	6	1/4	NO	470
SC-CMS32E-6	Self Contained	74"	30.5"	49.6"	115	9.1	1/3	NO	680
SC-CMS32E-8	Self Contained	98"	30.5"	49.6"	115	11.2	1/2	NO	910
R-CMS32E-4	Remote	50"	30.5"	49.6"	115	.8	1400	NO	430
R-CMS32E-6	Remote	74"	30.5"	49.6"	115	1.6	2100	NO	630
R-CMS32E-8	Remote	98"	30.5"	49.6"	115	1.6	2800	NO	860

MODEL NUMBER PREFIX - SC = Self Contained R = Remote
 MODEL NUMBER SUFFIX - W = White B = Black S = Stainless Steel LED = LED lighting
 • Cases are designed to operate at 75 degrees Fahrenheit and 55% relative humidity
 • Cases are equipped with drains; check your local building codes for connection requirements.
 • Specification subject to change without notice
 IF COLORS ARE MIXED AN ADDITIONAL CHARGE WILL APPLY



32E Series - Endless Design Single Duty - Red Meat

Standard Specifications and Optional Features

CONSTRUCTION

- UL Classified to ANSI/NSF 7
- Foamed in place CFC free foam
- Triple pane insulated front glass - 28" H
- Heavy gauge steel super structure
- Single duty display
- Endless design allows for continuous line up
- Drain is included for cleaning

INTERIOR

- White, black, and stainless steel ends
- Stainless steel heavy gauge mezzanine shelf (2 rows)
- White aluminum floor-main deck shelves
- Air insulated baffle (prevents moisture from dripping into display area)

EXTERIOR

- Double pane rear removable doors
- Removable front grille allows for cleaning
- Removable rear grille for easy servicing
- 1" removeable end panels

FINISHES

- Satin finish extrusion on doors and door tracks
- White, black, and stainless steel front and ends
- Stainless steel mirror trim
- Stainless steel heavy gauge top - 20" W
- Rear of unit is stainless steel brush finish at top
- Bottom rear is designer white aluminum

LIGHTING

- 2 rows of T12 lighting at top of unit

ELECTRICAL REQUIREMENTS

- 115V
- Unit must be hard wired
- UL/CUL listed
- 115V-12AMP general purpose receptacle (wired separately)

REFRIGERATION

- Coevap system (eliminates need for condensate pan)
- R134A expansion valve system
- Gravity coil located at inside top of unit
- Humidity coil located at main deck (provides extra humidity)
- Self contained unit
- Automatic defrost controlled by time clock (self contained unit only)
- Pressure control maintains constant temperatures
- Remotes available

OPTIONS

- Stainless steel, laminate, or paint
- Mirrored doors
- Extra stainless steel mezzanine shelf
- Front bumper 1" or 3"
- Door locks
- Pass thru front doors
- Meat platters
- Red meat bulbs

Important Note:

All refrigerated cases are designed to operate in an environment of 75 degrees and 55% relative humidity. Product must be cooled before being displayed within the case.

DRAIN IS REQUIRED

32E Series - Endless Design Single Duty - Red Meat

Technical Data

Model No.	SC R	SC-CMS32E-4 R-CMS32E-4	SC-CMS32E-6 R-CMS32E-6	SC-CMS32E-8 R-CMS32E-8
Length with (2) ends		50"	74"	98"
Length without ends		48"	72"	96"
Height with ends		49.625"	49.625"	49.625"
Height without ends		49"	49"	49"
Depth with ends		30.5"	30.5"	30.5"
Depth without ends		30"	30"	30"
Endless design (Dimensions are +/- 1/4")		YES	YES	YES
Operating temperature		34°F to 36°F	34°F to 36°F	34°F to 36°F
Refrigerant (exp. valve)	SC	R134A	R134A	R134A
Compressor size HP	SC	1/4	1/3	1/2
Defrost per day (24 hours)	Air Defrost	1 per day	1 per day	1 per day
BTU's at +20°F Evap. Temp.	R	1400	2100	2800
Voltage	SC	115	115	115
Amperage	SC	6	9.1	11.2
Remote Voltage	R	115	115	115
Amperage, lights only	R	0.8	1.6	1.6
Cord and plug	SC R	NO NO	NO NO	NO NO
Exterior color		W, B, S	W, B, S	W, B, S
Interior color		W, B, S	W, B, S	W, B, S
Floors		W, B, S	W, B, S	W, B, S
# of top doors		2	2	4
Door size		20.5" x 23.5"	31" x 23.5"	20.5" x 23.5"
#of coils		2	2	2
Bottom storage		NO	NO	NO
Front glass size		28" x 46.6875"	28" x 70.6875"	28" x 94.6875"
# of main deck shelves		2	3	4
Main deck size		23.625" x 25"	23.625" x 25"	23.625" x 25"
Cubic capacity		23	34.5	46
Mezzanine shelf, 2 rows		Standard	Standard	Standard
Shipping Info				
Height		55"	55"	55"
Depth		44"	44"	44"
Length		61"	87"	115"
Gross weight SC/R		470/430	680/630	910/860
Cubic feet		85	122	161

(ALL WHITE OR ALL BLACK, NO EXTRA CHARGE—IF COLORS ARE MIXED AN ADDITIONAL CHARGE WILL APPLY)

Prefix

SC = Self Contained
R = Remote

LS = T8 lighting

Suffix

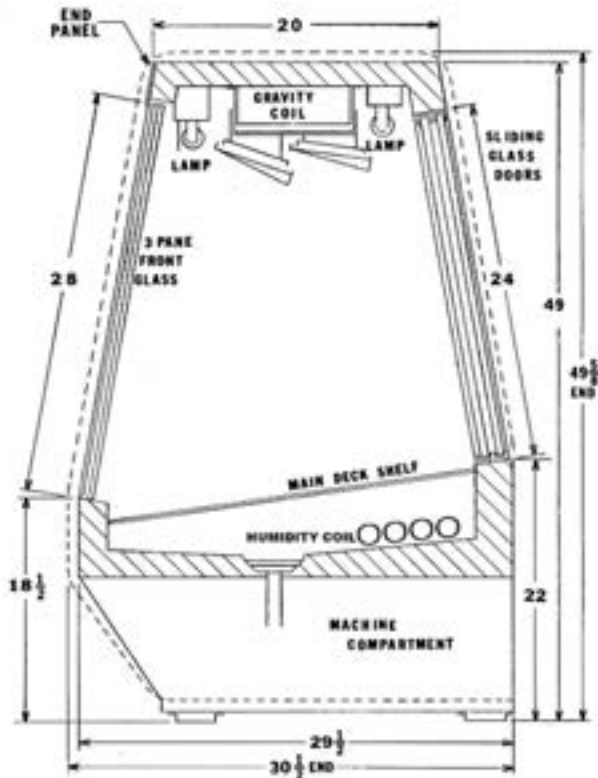
B = Black
W = White
S = Stainless Steel

LED = LED lighting

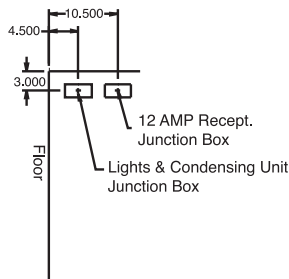
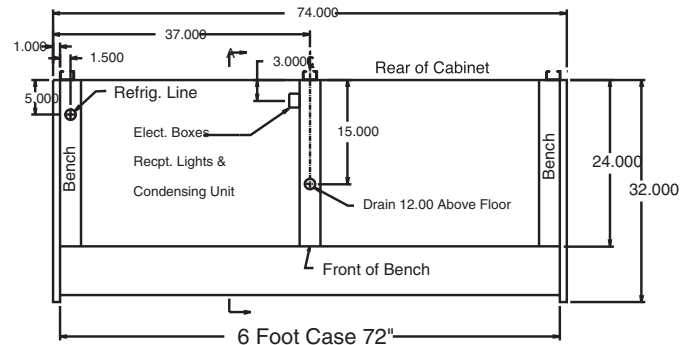
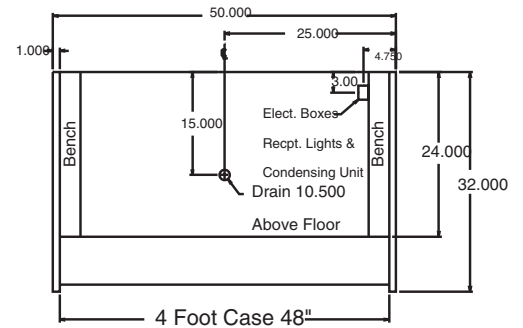
- Cases are designed to operate at 75 degrees Fahrenheit and 55% relative humidity
- Cases are equipped with drains; check your local building codes for connection requirements.
- Specification subject to change without notice

32E Series - Endless Design Single Duty - Red Meat

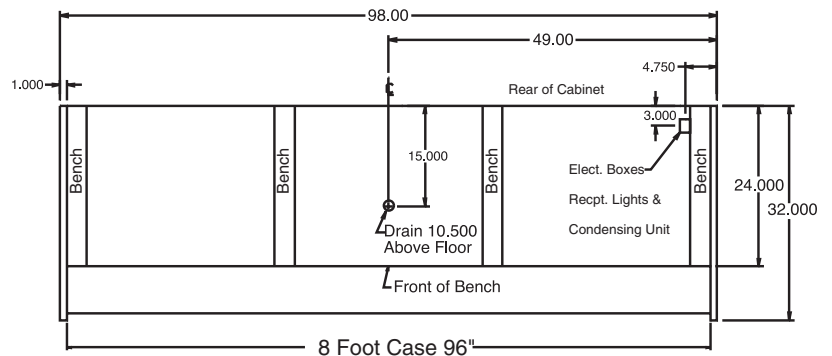
Technical Data • Side View • Plan View



Cross Section



Side View



Plan Views